



Osprey Approach: Re-enabling the Outlook Connector

This help guide was last updated on
Dec 21st, 2022

The latest version is always online at
<https://support.ospreyapproach.com/?p=2240>



Sometimes the Osprey Outlook connector can disappear but it is possible to re-enable so it shows up again.

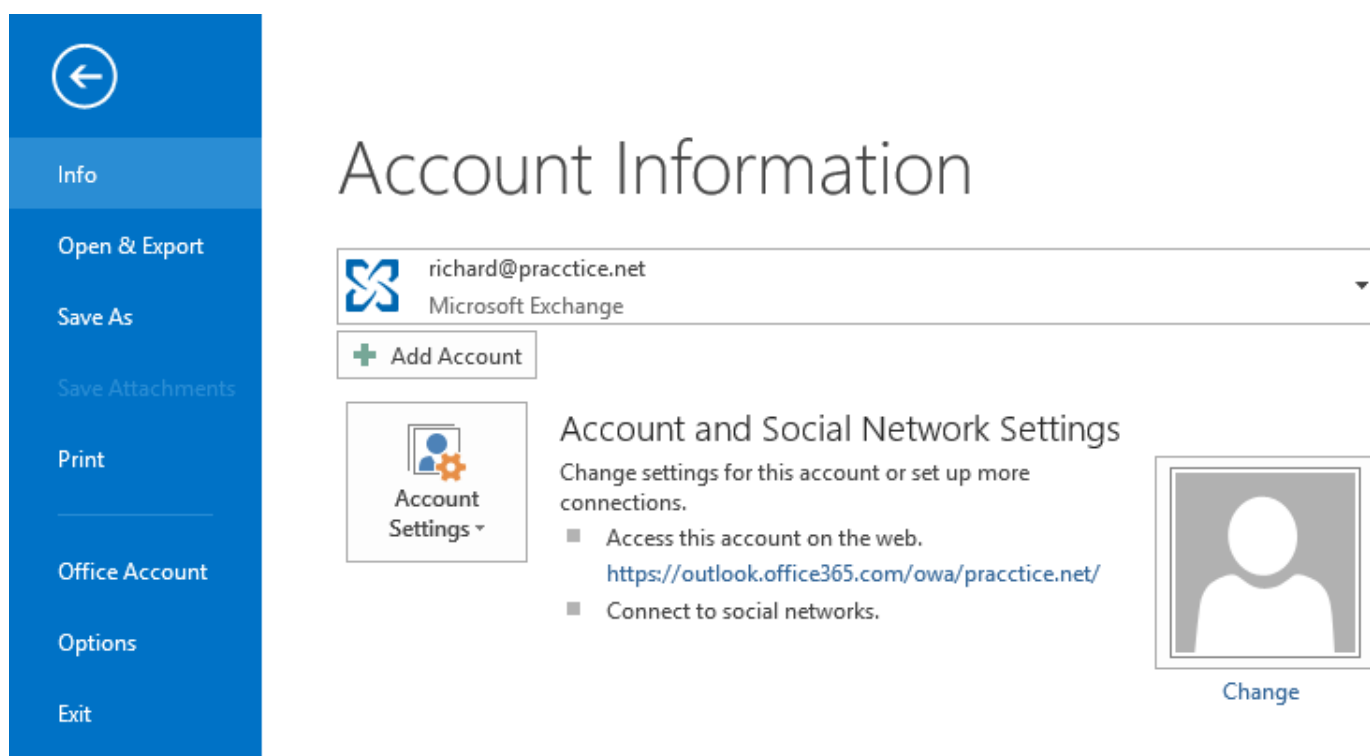
Should Outlook take longer than usual to open, it can disable any recently installed add-ins to assist itself in running more quickly.

If the Osprey Connector has been disabled, the following steps will allow you to re-enable it.

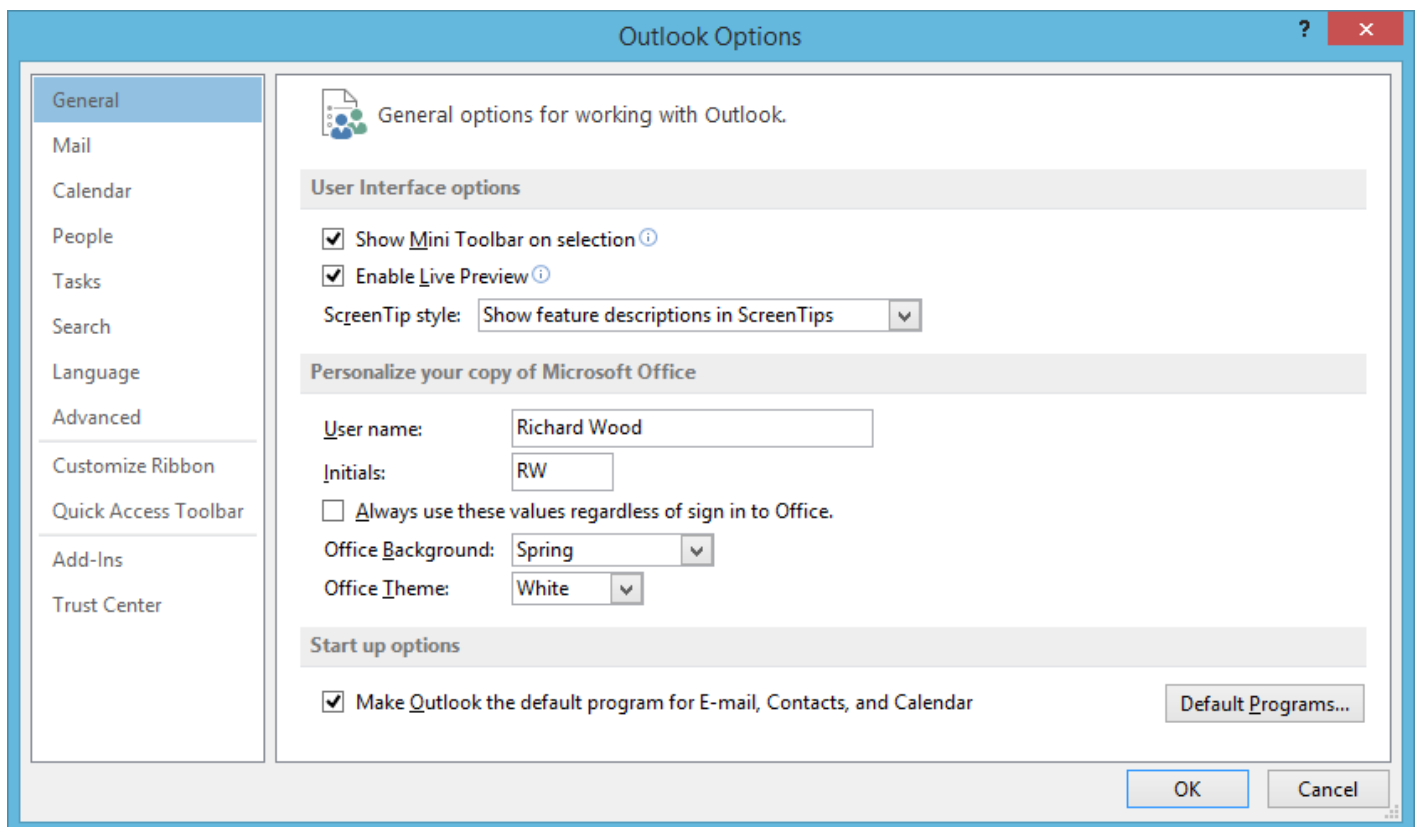
Open up Outlook and select the 'File' tab in the top left to open the side menu.



From here, select the 'Options' tab.



The 'Outlook Options' panel will now appear. Select the 'Add-Ins' button on the side menu to open up your list of currently available add-ins.



The Osprey Outlook Add-In will be present in either the 'Inactive' or 'Disabled' add-ins list.

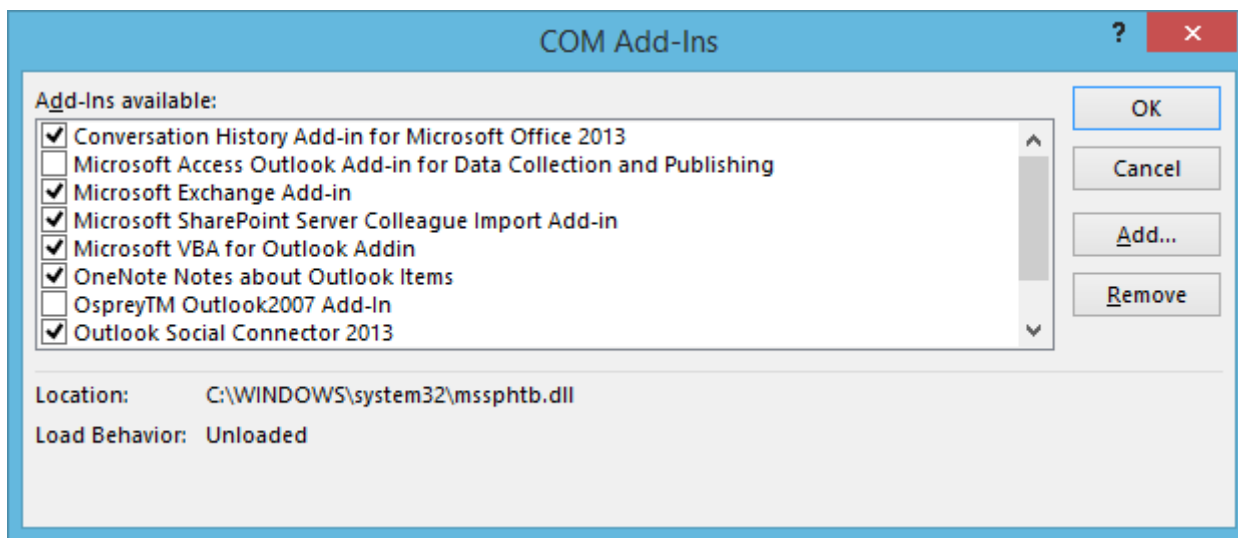
Name ^	Location	Type
Active Application Add-ins		
Conversation History Add-in for Microsoft Office 2013	C:\...\Office15\OcOffice.dll	COM Add-in
Microsoft Exchange Add-in	C:\...\UmOutlookAddin.dll	COM Add-in
Microsoft SharePoint Server Colleague Import Add-in	C:\...S\ColleagueImport.dll	COM Add-in
OneNote Notes about Outlook Items	C:\...ffice15\ONBttnOL.dll	COM Add-in
Outlook Social Connector 2013	C:\...IALCONNECTOR.DLL	COM Add-in
Skype Meeting Add-in for Microsoft Office 2013	C:\...\Office15\UCAddin.dll	COM Add-in
Inactive Application Add-ins		
Microsoft Access Outlook Add-in for Data Collection and Publishing	C:\...ADDINS\ACCOLK.DLL	COM Add-in
Microsoft VBA for Outlook Addin	C:\...DDINS\OUTLVBA.DLL	COM Add-in
Osprey™ Outlook2007 Add-In	C:\...bb9a82\adxloader.dll	COM Add-in
Disabled Application Add-ins		
Windows Search Email Indexer	C:\...stem32\mssphthb.dll	COM Add-in

Underneath the add-ins list, there will be a 'Manage' drop-down list. By default, this should be set to 'COM Add-Ins' but if this is not the case, select it from the drop-down list and then click 'Go'.

Manage: COM Add-ins Go...

The 'COM Add-Ins' panel will now appear.

Somewhere in the list, you will see the Osprey Outlook Add-In which, if the tab has disappeared, is likely to be unticked, as below.



Place a tick in the box next to the Osprey Add-In and then select 'OK' to close the panel.

Your Osprey Approach tab should now reappear at the top of your screen. If not, you may need to close and reopen Outlook to ensure that the tab reappears.